

Tuberculosis update Denmark, 2010

Bolette Søborg
Dept. of Epidemiology Research & Dept. of Infectious Disease
Epidemiology
Statens Serum Institut
Copenhagen, Denmark

Contact: Bolette Søborg
bot@ssi.dk

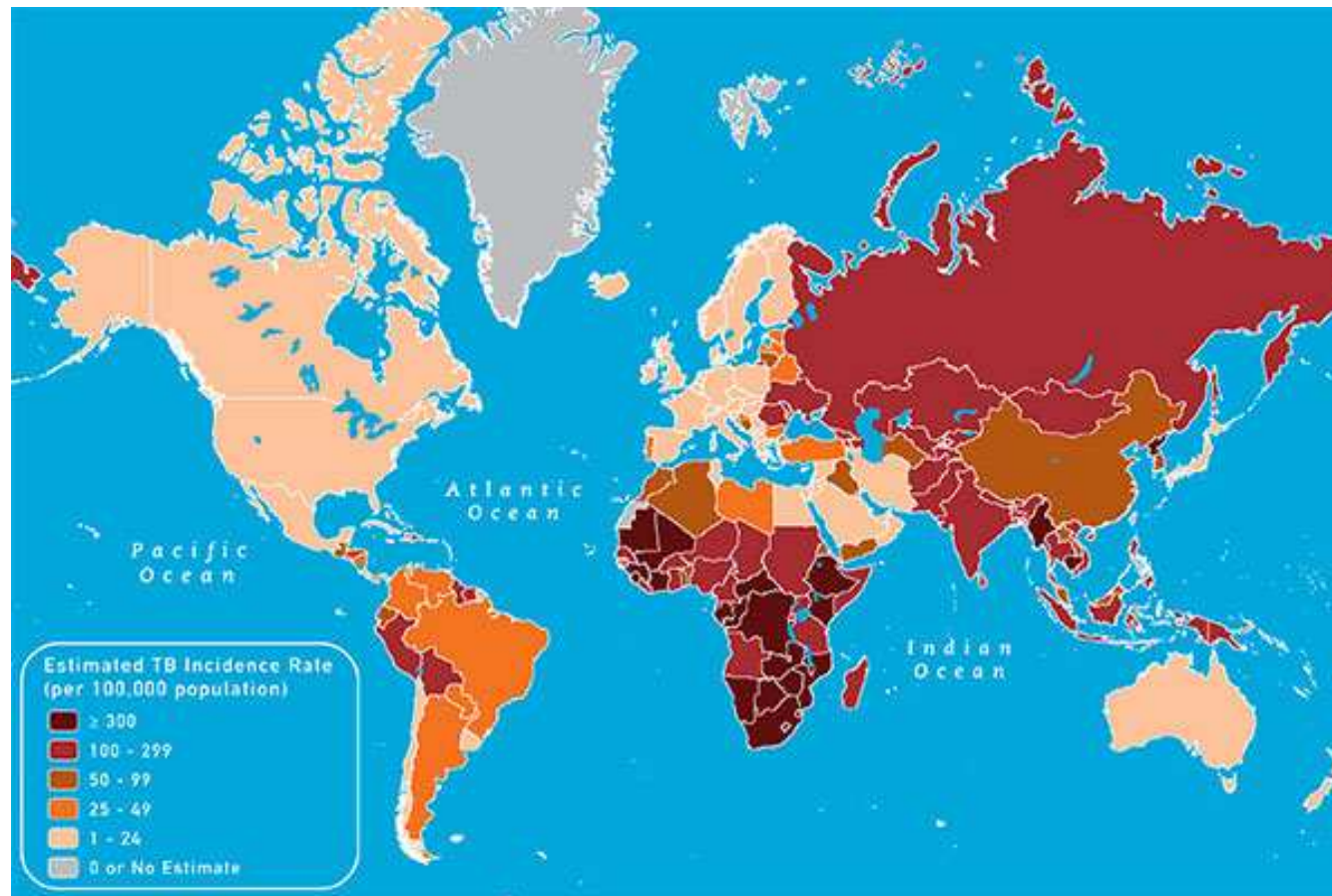
Denmark

- Denmark is a sovereign state in Northern Europe, with two additional overseas constituent countries forming parts of the kingdom;
- the Faroe Islands in the North Atlantic
- and Greenland in North America.



- 89.6% of Denmark's population of over 5,580,516 is of Danish descent.
- The remaining 10.4% are immigrants—or descendants of recent immigrants.
- There are also small groups of Inuit and Faroese

Global TB incidence 2010

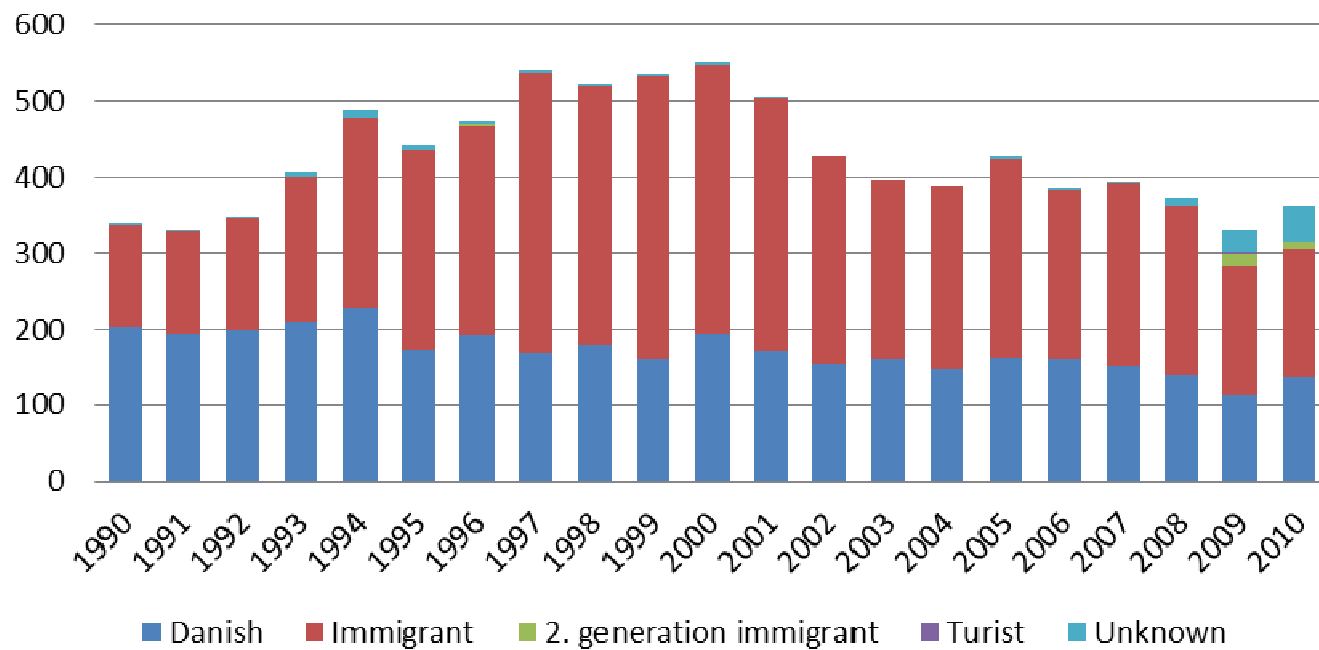


<http://wwwnc.cdc.gov/travel/yellowbook/2012/chapter-3-infectious-diseases-related-to-travel/tuberculosis.htm>

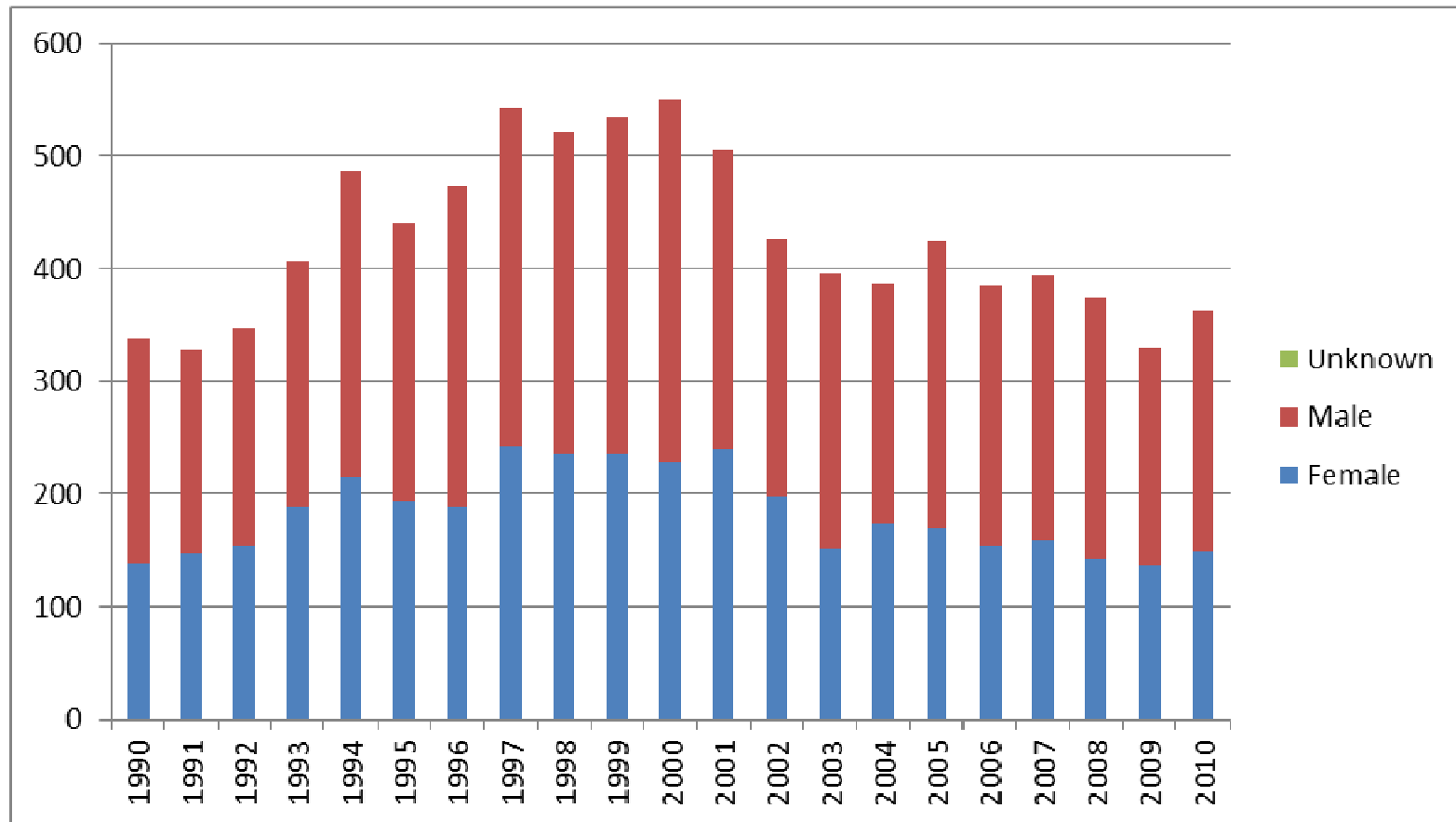
Danish TB notification

- Mandatory notification of all cases to Dept. of Infectious Disease Epidemiology, Statens Serum Institut
- Yearly cross checking of all notified cases with the National Reference Laboratory of Mycobacteriology, Statens Serum Institut

**Tuberculosis notifications
Denmark 1990-2010
by immigration status**

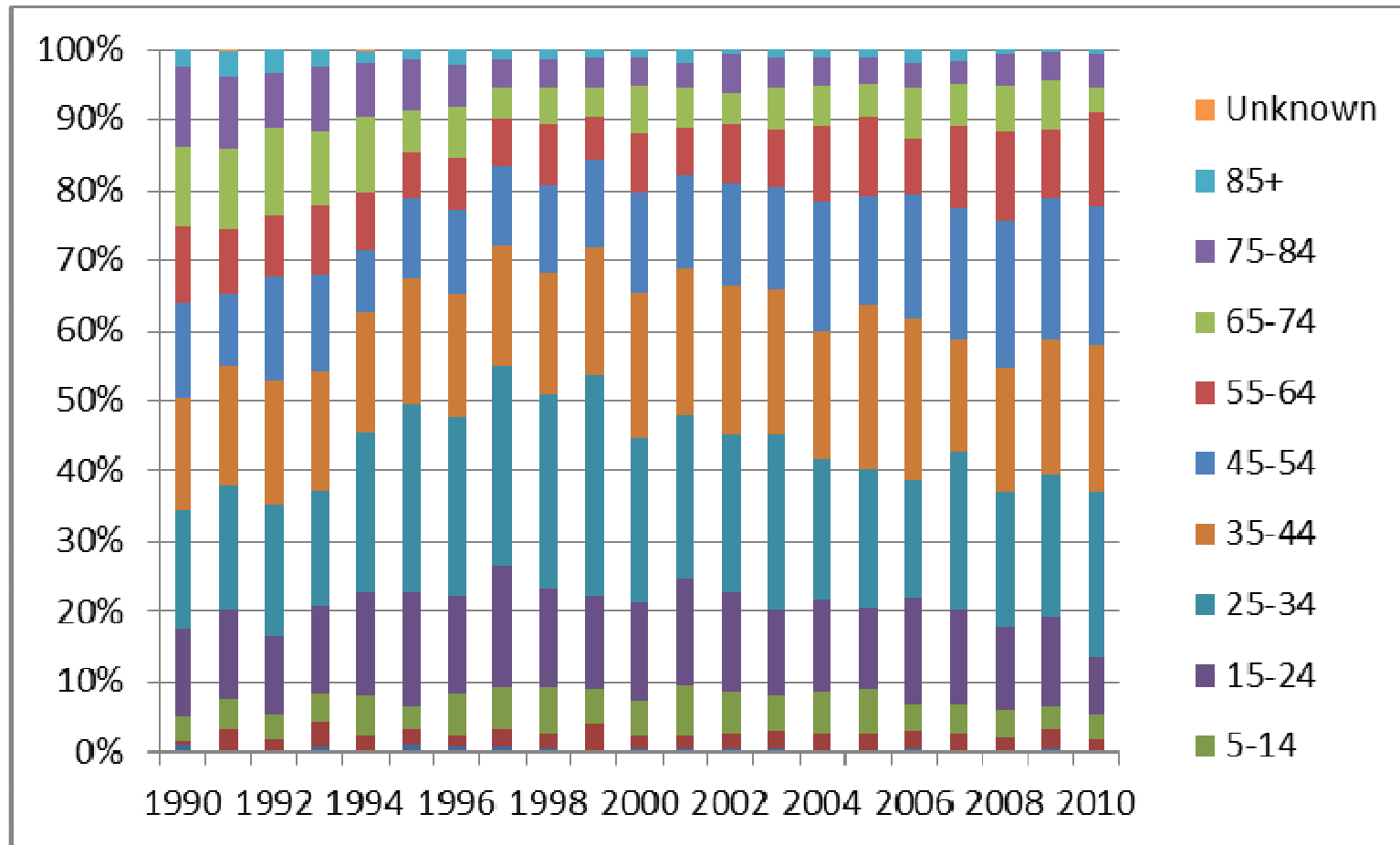


Number of cases 1990-2010 by gender

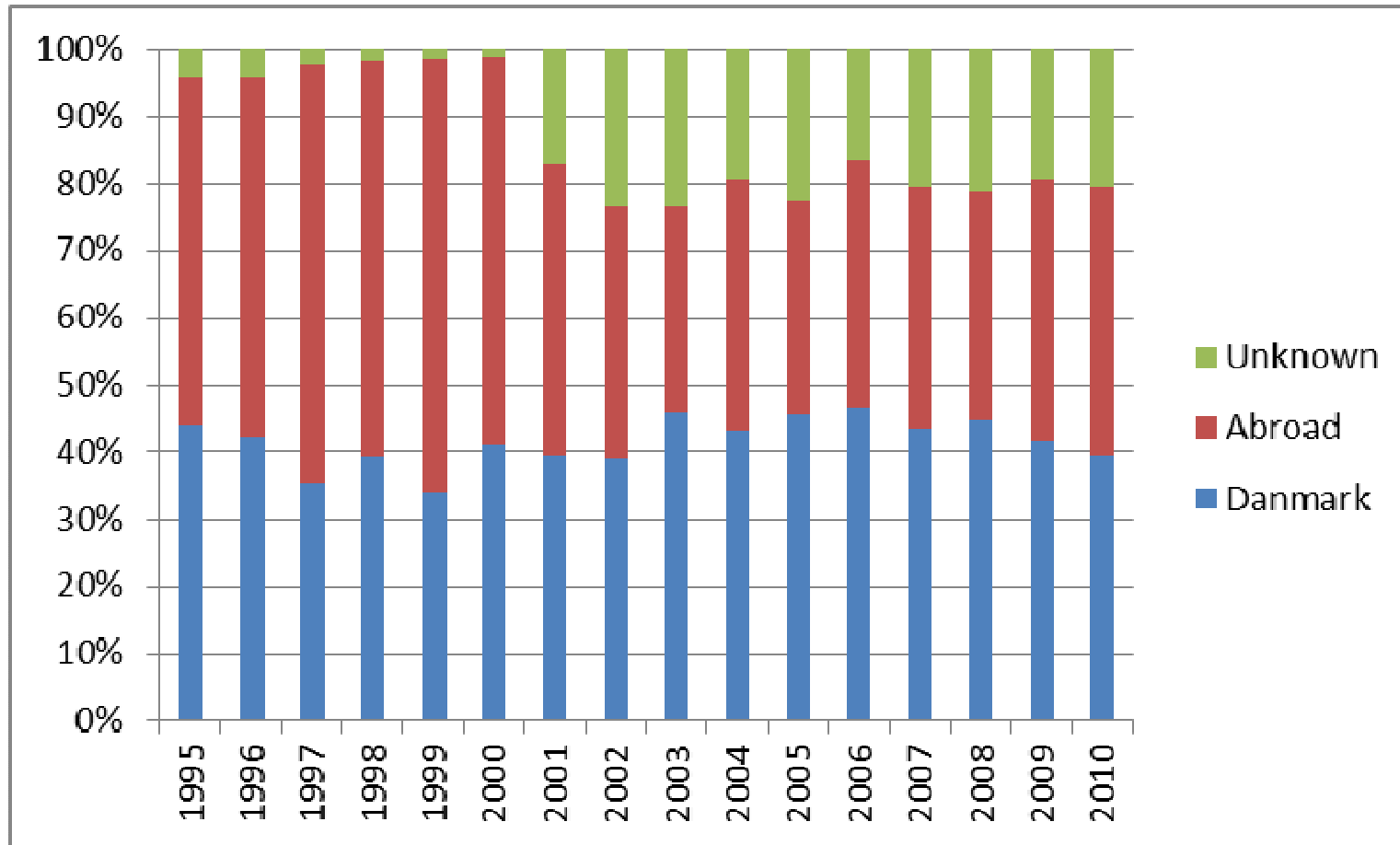


TB in Denmark 1990-2010

by age group



TB in Denmark 1995-2010 by country of infection



TB 2010

- 359 cases notified with TB in 2010 (incidence: 6.5/100.000)
- 224 (64%) of cases diagnosed among immigrants hereof 65 (28%) cases among Greenlanders in Denmark (incidence: 450/100.000)
- Overall, 79% verified by culture, hereof 81% of all pulmonary cases.
- 57 % of pulmonary cases positive by microscopy
- 7% of culture positive cases mono resistant and two cases multi drug resistant

Conclusion

- Overall low TB incidence, outbreak in late 1990ies, however increasing number of cases from 2009
- TB mostly among immigrants including Greenlanders
- 2010 showed an increasing number of TB cases among Greenlanders in Denmark

Thank you